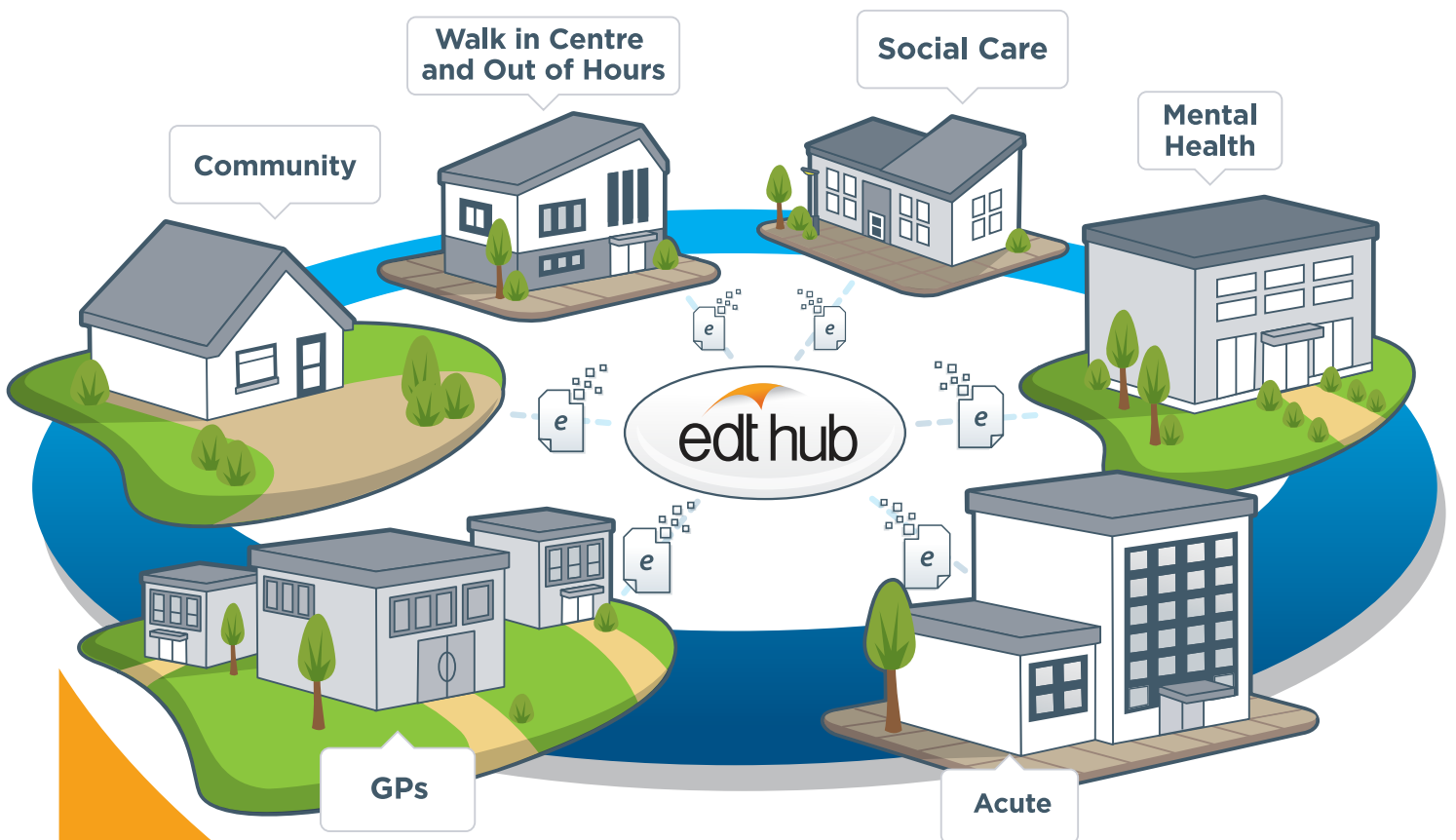


Electronic Document Transfer

EDT Hub a multi-directional document transfer platform provides a secure, reliable and flexible platform for the electronic communication of documentation between Secondary, Primary and Social Care providers.



www.pcti.co.uk

pcti

docman

edt hub

Electronic Document Transfer



Electronic Document Transfer (EDT) provides a secure, reliable and flexible platform for the electronic communication of documentation between Secondary, Primary and Social Care providers.

EDT Hub a multi-directional document transfer platform linking into existing document workflow solutions enables documents to be efficiently and securely moved around the NHS and Social Care. The solution in line with patient care plan needs supports timely information and a paper-light NHS.

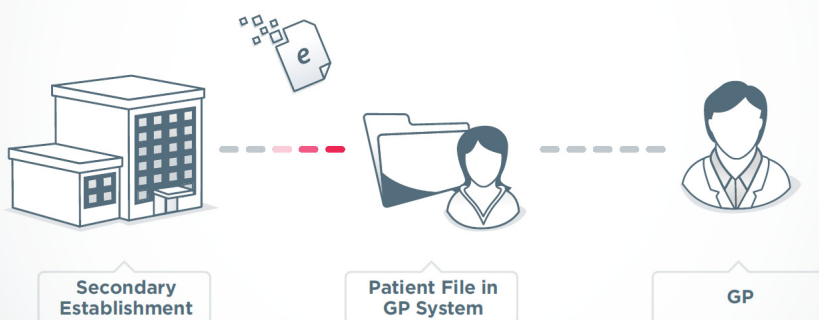
Multi-directional document transfer

EDT Hub enables the sending and receiving of electronic documents between Health and Social Care organisations. The EDT platform is a proven solution currently delivering clinical letters such as Discharge Summaries, Outpatient Letters and Out of Hours reports from over 50 provider organisations. EDT Hub will enable the two way document transfer between organisations, for example GP practices sending electronic documents to hospitals.

Interoperability

It's easy to send documents using EDT Hub with a range of interface adapters, this includes accreditation to Interoperability Toolkit (ITK) standards.

“ Letters can now be received electronically with no need to scan them in. We have seen an improvement in the service to our patients, it has made it quicker to view comments and results, to give the patient improved information within a faster time scale. ”



Key Benefits

- QIPP enabler
- Back office efficiency
- Eliminate costs
- Joining health and social care
- Transfer any document type
- Cost effective
- Interoperability Toolkit Compliant

Transfer any document type

- 📄 Discharge Summaries
- 📄 Discharge Letters
- 📄 Encounter Reports
- 📄 Radiology Reports
- 📄 Outpatient Clinic Letters
- 📄 Out-of-Hours Reports
- 📄 GP generated documents

Do you know the cost of paper correspondence?

Secondary Care providers send a wide range of information to GPs in a variety of formats. Some documentation is sent electronically, however the majority of important communications are still sent by the traditional method of post. The cost to print and deliver a document by post can be up to £1 per letter. By switching to EDT Hub these documents can be delivered electronically, generating time and cost savings.

Trust Benefits

- EDT Hub provides an end-to-end real time audit trail
- Realise savings on printing and postage
- Link multiple systems to EDT Hub with only a single link to the GP practice
- Send both structured and unstructured documents in a way which requires minimal processing by the practice

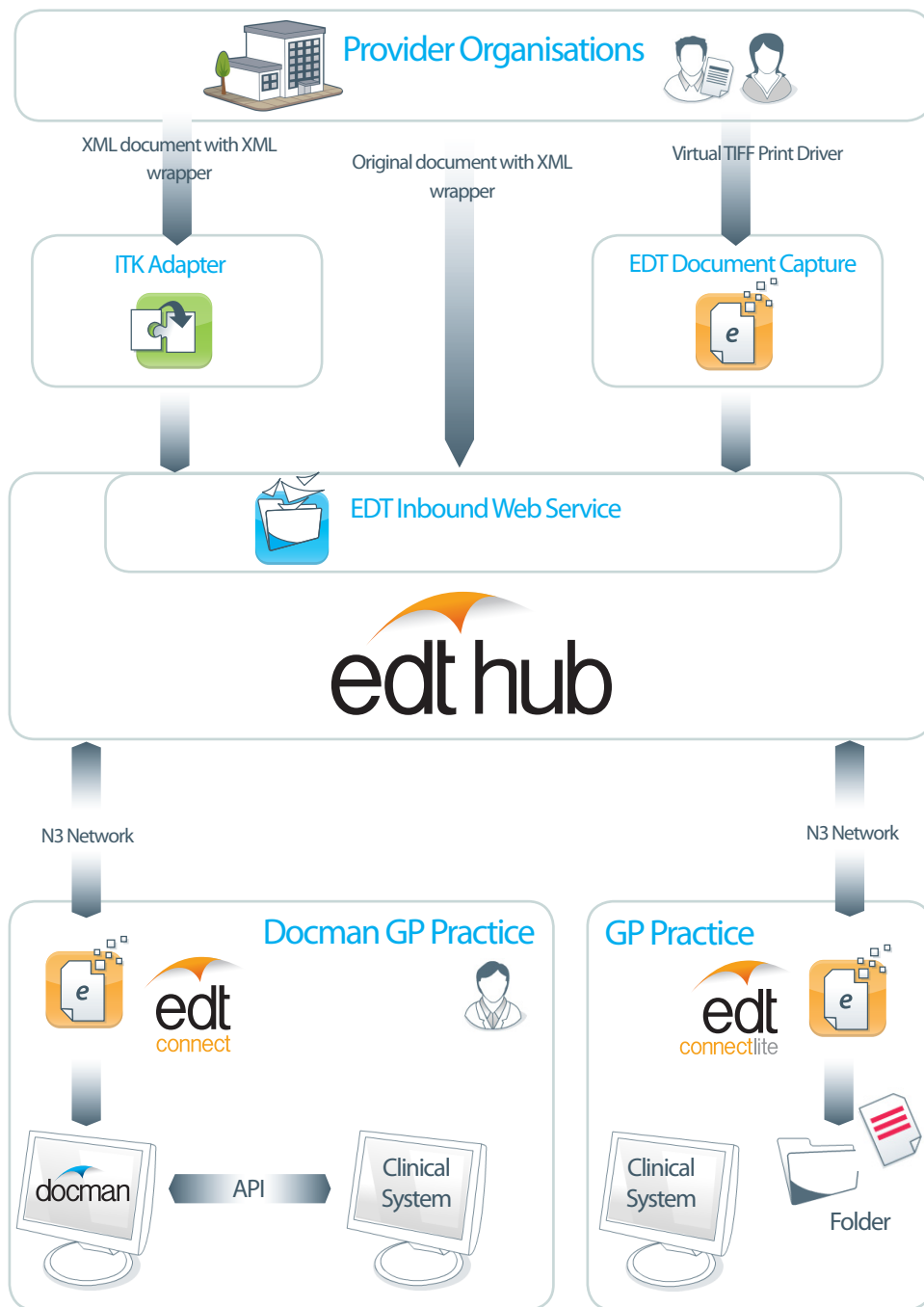
GP Benefits

- Electronic documents are delivered to the practice automatically at pre-defined intervals
- The solution offers high levels of security delivering documents over N3 using HTTPS (SSL Security)
- All incoming documents are received in the same way
- Documents including 'meta-data' (patient and document information) are auto-filed with minimal user intervention
- Documents are delivered into the centre of GP workflow processes
- Send electronic documents securely to organisations

Testimonial

Shantel Habib, Technical Project Manager, NHS Eastern and Coastal Kent, "Our Acute Trust, East Kent Hospitals University Foundation Trust, will be sending discharge summaries and clinic letters (A&E letters, outpatient letters etc) electronically to GP Practices using EDT Hub and we expect to be sending around 900,000 documents a year. The solution will create significant time savings for GP Practices and will of course provide significant cost savings for the Hospital."

The EDT Hub Process



EDT Hub is being used by over 50 Trusts to send electronic documents to GP practices.

For further information

To discuss how EDT can benefit you, please contact our sales team on 01977 664496 or email edt@pcti.co.uk

Online Demonstration
www.pcti.co.uk/onlinedemo

Request a Meeting
www.pcti.co.uk/onsitedemo